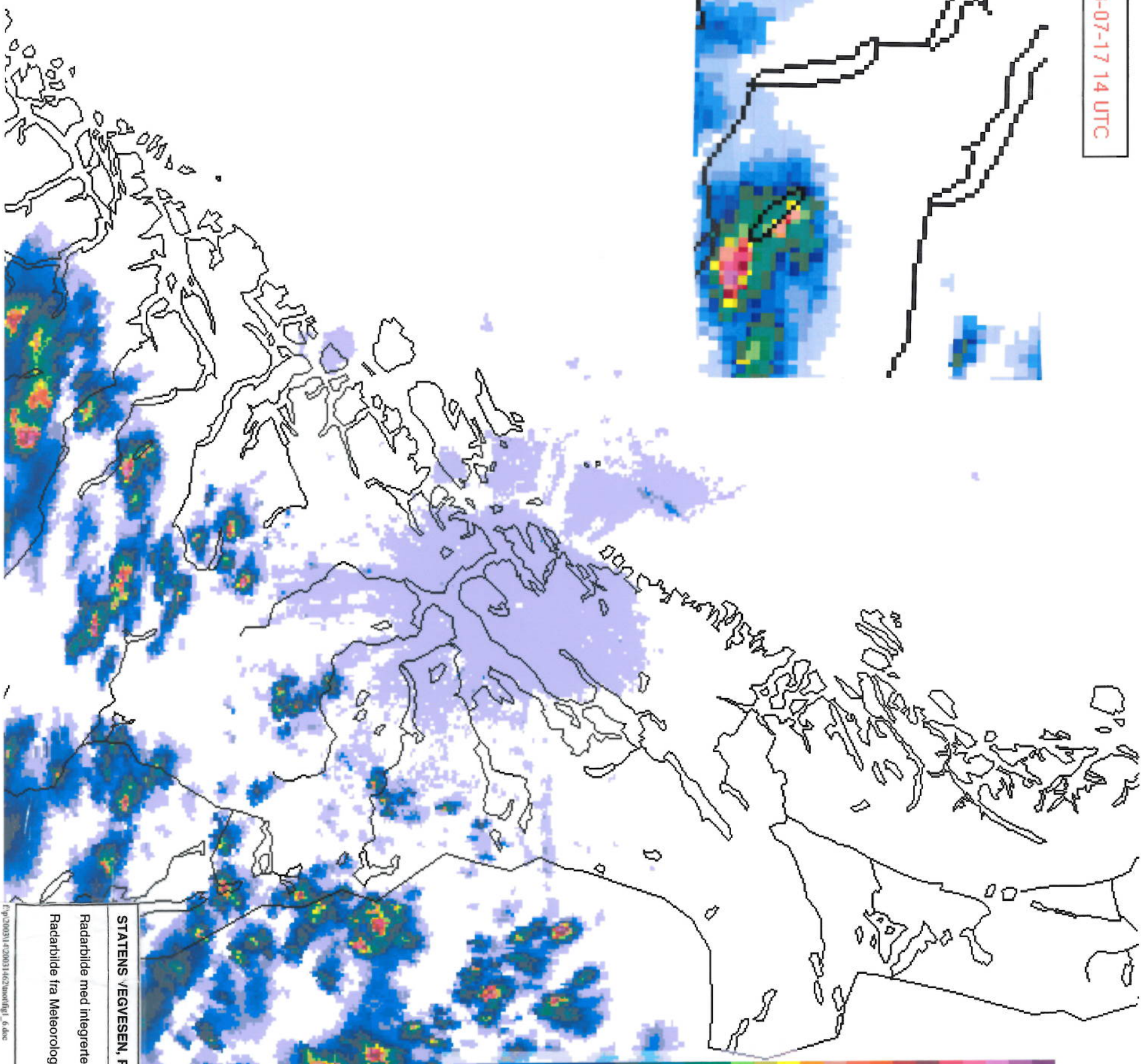
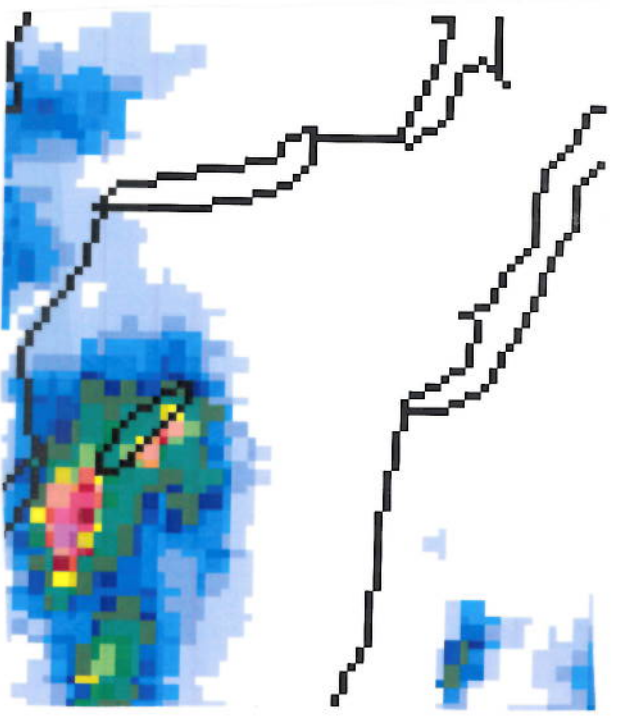
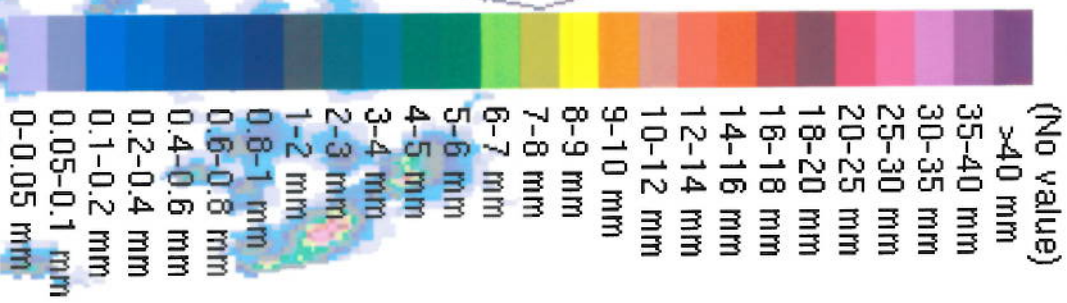


Torsdag 2003-07-17 14 UTC



ACC. PRECIPITATION:

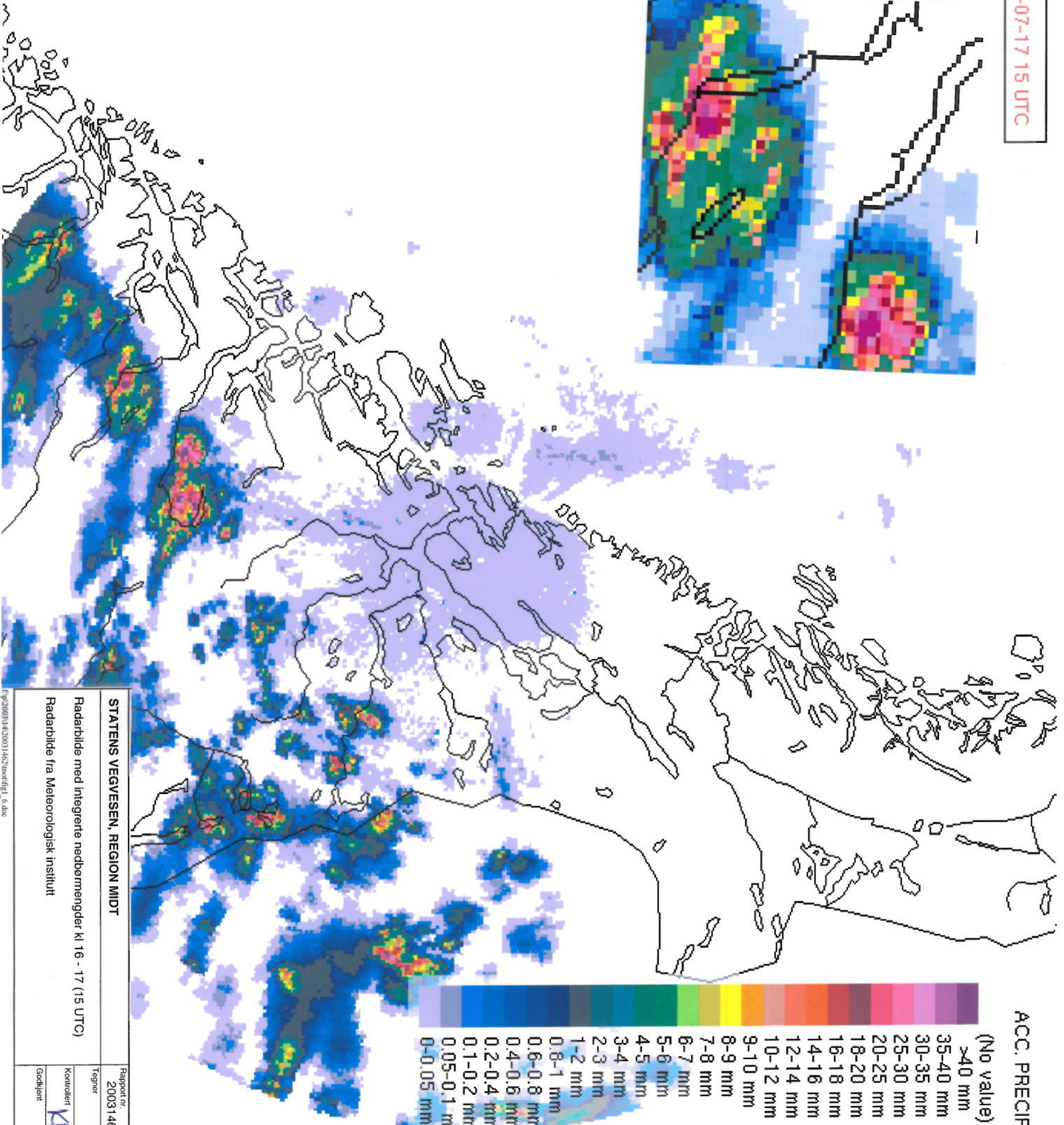
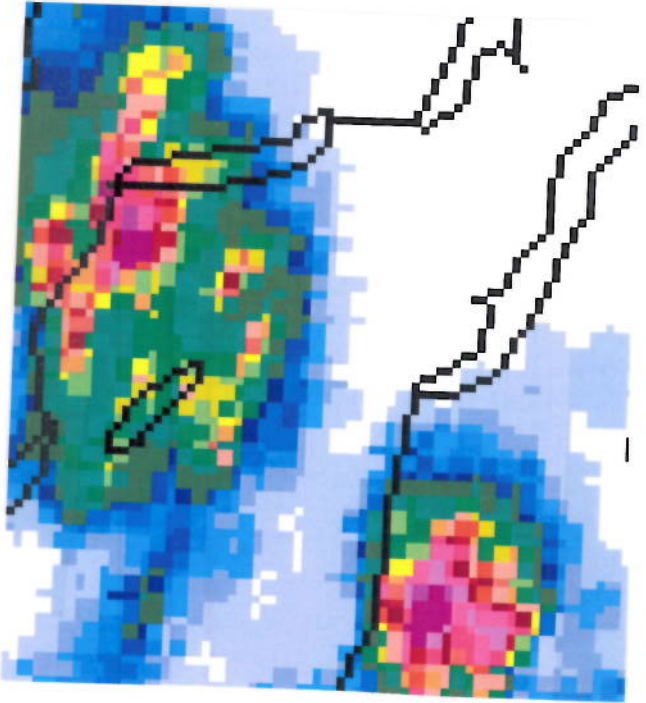


STATENS VEGVESEN, REGION MIDT	
Rapport nr. 20031462	Figur nr. 2
Tegner	
Kontrolleret KB	
Godkendt	
Dato 2003-07-24	
NGI	

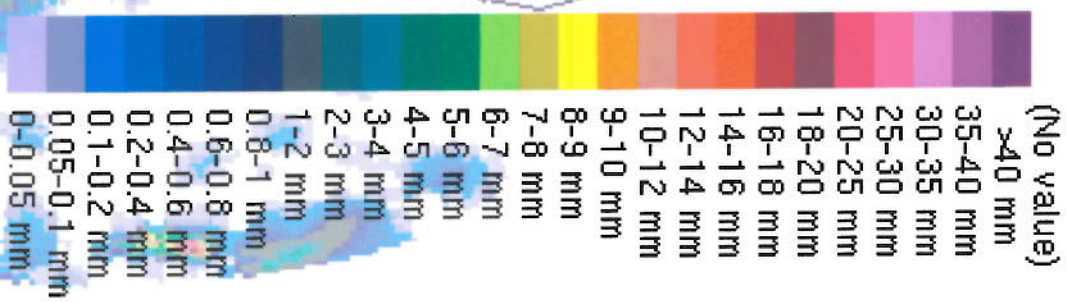
Radarbilde med integrerte nedbørmængder kl 15 - 16 (14 UTC)
Radarbilde fra Meteorologisk institutt

Figur200314620031462bwrdfgr_6.doc

Torsdag 2003-07-17 15 UTC

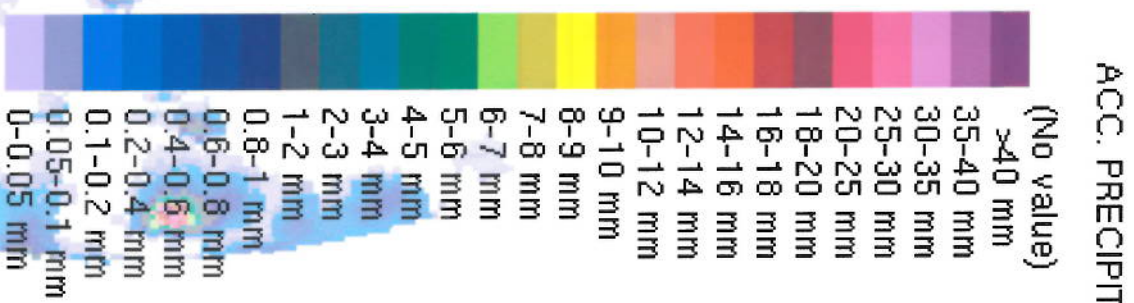
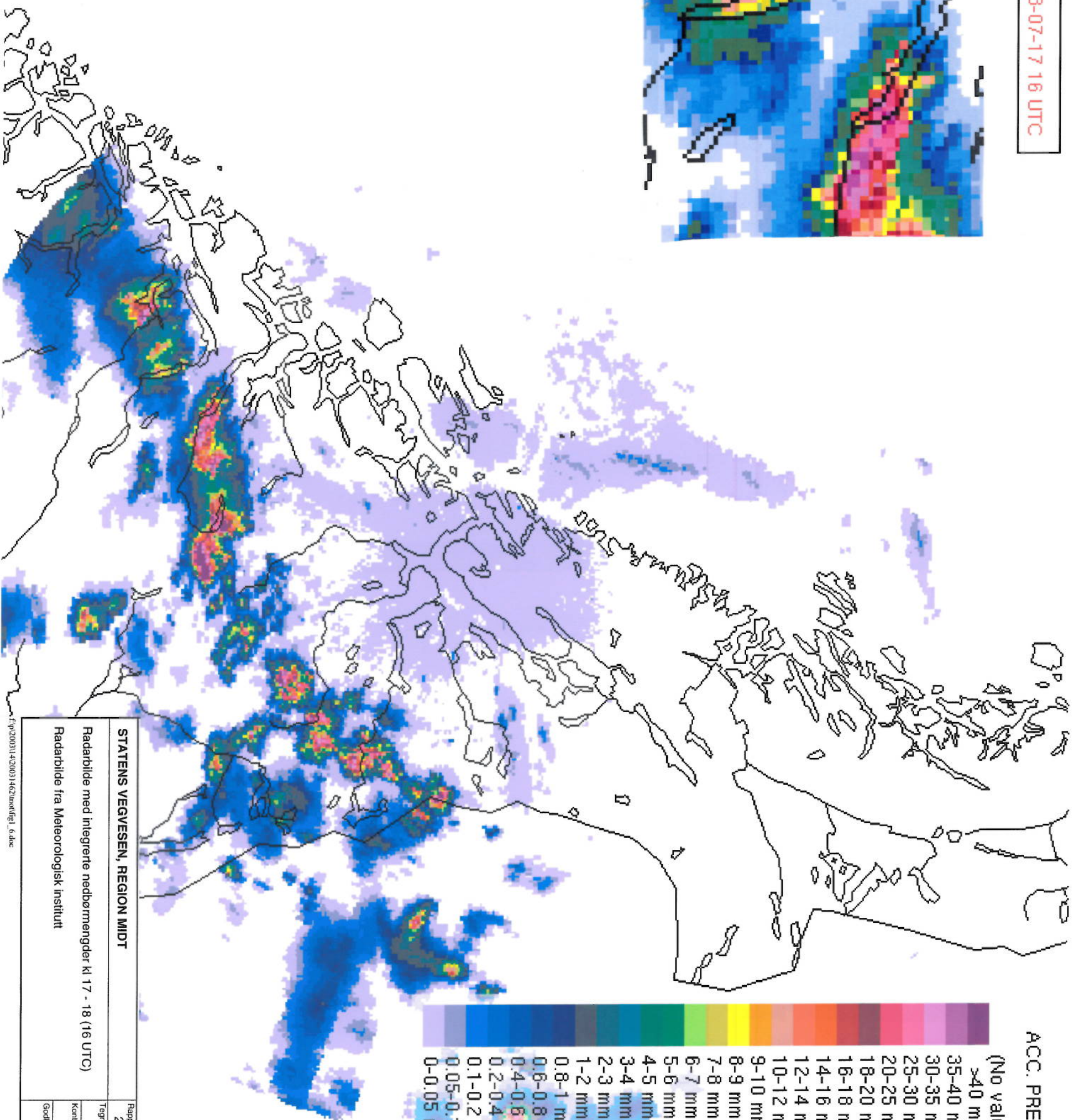
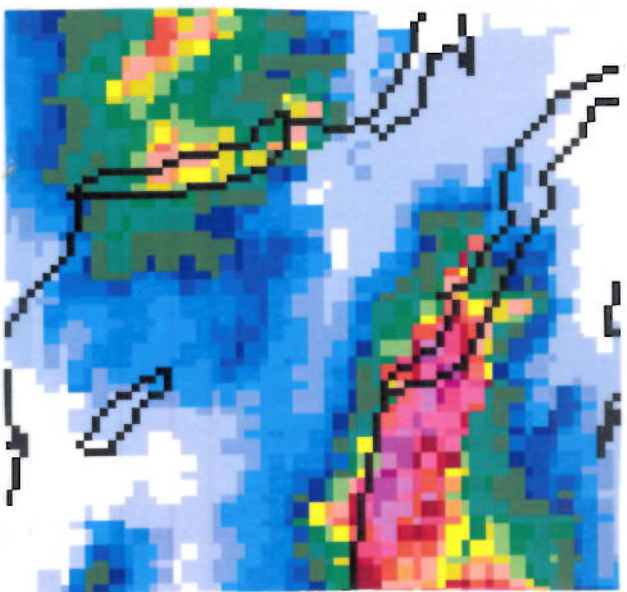


ACC. PRECIPITATION:



STATENS VEGVESEN, REGION MIDT	
Rapport nr. 20031462	Figur nr. 3
Tegn nr.	Dato 2003-07-24
Kontrollert KB	Godkjent
Radarbilde med integrerte nedbørmengder kl 16 - 17 (15 UTC) Radarbilde fra Meteorologisk institutt	

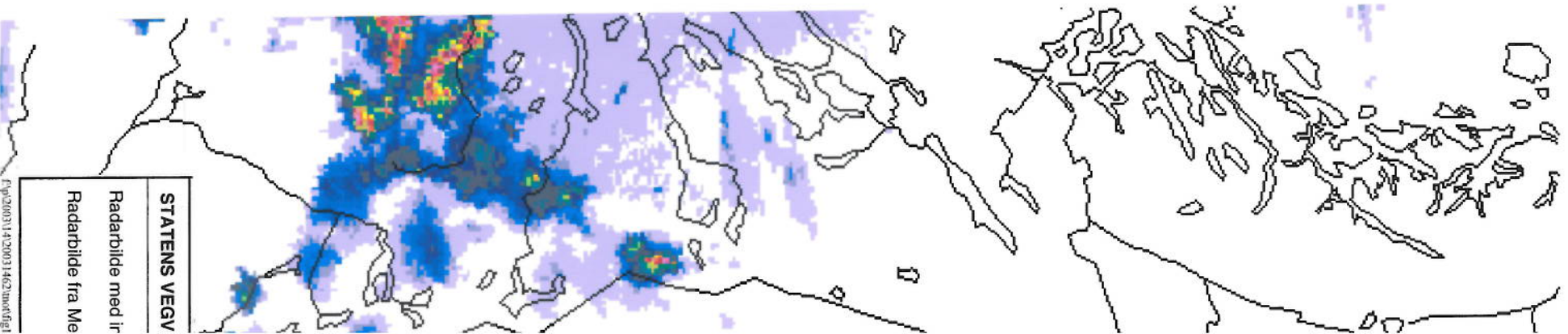
Torsdag 2003-07-17 16 UTC



STATENS VEGVESEN, REGION MIDT

Radarbilde med integrerte nedbørmengder kl 17 - 18 (16 UTC)
 Radarbilde fra Meteorologisk institutt

Rapport nr. 20031462	Figur nr. 4
Tegn nr.	Date 2003-07-24
Kontrollert KB	
Godkjent	



STATENS VEGV

Radarbilde med ir
 Radarbilde fra Me

Rapport nr. 20031462	Figur nr. 4
Tegn nr.	Date 2003-07-24
Kontrollert KB	
Godkjent	